

PK1D

2 Component Dispenser
Fix Ratio

Fluidic
Systems



Applications

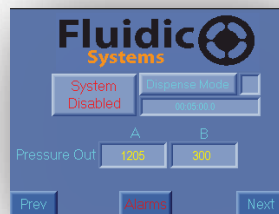
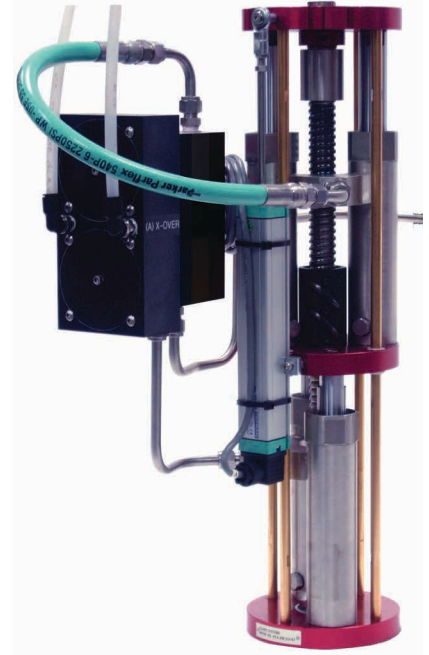
Adhesive/Sealants
Potting/Encapsulants
Paints/Coatings

Markets

General Industrial
Electrical/Electronic
Automotive
Military/Aerospace Industries.

Features and Benefits

- Linear Displacement Pump (LDP) - Double acting positive displacement rod pumps (Patented)
 - Continuous metered flow (virtually pulse-free) = Shorter Cycle Time
 - Dynamic flow rate control 1cc/min. to >gal/min. = Precision Flow Control
 - Viscosity range 1cps to heavy non-flow abrasive compounds = Universal Pump Utility
 - Pressure range 1psi to >3,000psi = Universal Pump Utility
 - No Pistons, Check Valves, Flow Meters = No Slip Factor, No Calibration, Reliability
 - Low shear = Density Integrity of Syntactic Compounds
- Cross-Over Valve (XV2) – Automated 4-way directional flow control valve (Patented)
 - Replaces check valves for load/dispense functions during LPD reciprocations = Reliability
 - Allows pressure balancing inlet/outlet pressures = Continuous Pulse-Free Metered Flow
- PLC Servo Motor Pump Drives Control Benefits:
 - Enables Precision Mix Ratio, Flow Control and Factory Automated Control Functions
- Touch Screen Benefits:
 - No Mechanical Control Adjustments, Control Integrations



Standard Features

- Linear Displacement Pumps (LDP)
- Cross-Over Valves (XV2)
- PLC Controlled Servo Drive
- Touch Screen Control Interface (6" Mono Chrome)
- Dispense Valve Gun
- Floor Stand
- Dispense Modes: Manual / Programmable

PK1D Animation

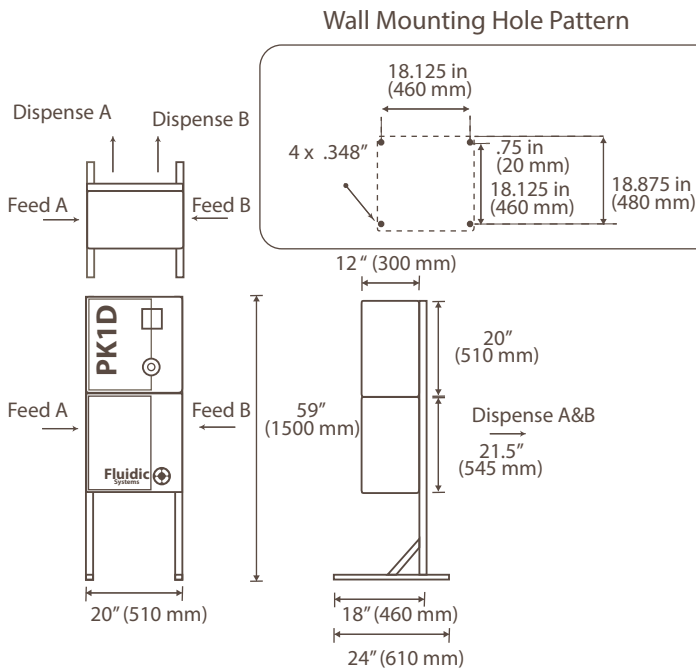


Optional Features

- Material Supply Sensors (MSS) – Inlet Material Sensors
- Liquid Level Sensors - Pressure Pots, Pails, Drums, Totes
- Auto Pressure Balancing – Inlet Supply / Outlet Dispense Pressures
- Static Mounted Dispense Valve - Foot Switch or Robotic Activation
- Robotic Integration – Start/Stop, Flow Control, Purge/Flush Control
- Type X Air Purge – Class I, Div1, Group D
- Material Supply – Pressure Pots / Transfer Pumps
- Signal Tower – LED Light/Audible Alarm
- Cabinet Surface Mount Brackets
- Overhead Jib Crane
- TFE SS Braided Hose Assemblies
- Thermostatic Controlled Heating Solutions



Dimension Drawings for PK1D. All dimensions are in inches (millimeters).



Technical Specifications

Mix ratio range A:B - Fixed ratio.....	1:1 2:1 4:1 10:1*
Mix ratio tolerance range	±1%*
Minimum shot size.....	0.5 g/0.018 oz)*
Minimum flow rate5 cc/min (0.17 fl.oz/min)*
Maximum flow rate	5,000 cc/min (1.35 gal/min*)
Maximum fluid working pressure	>3,000 psi*
Air supply pressure range.....	5-8.5 kg/cm ² (80-120 psi) @ 20 CFM
Operating temperature range	4 to 60 C (40 to 140 F)
Electrical requirements:	120 VAC (60 Hz) 1Φ, 15 amps
	220 VAC (60 Hz) 1Φ, 15 amps
Wetted material..	303, 316 SS, TFE UHMWPE, anodized aluminum
Viscosity range of fluids	1 cps to Non-flow abrasive comp.
Fluid Handled	One or two components
(epoxies, urethanes, silicones, acrylics, polyesters)

*Application dependent

Fluidic Systems

2655 S. Orange Avenue, Santa Ana, CA 92707-3738
+1(714)556-6747
www.fluidicsystems.com
sales@fluidicsystems.com