

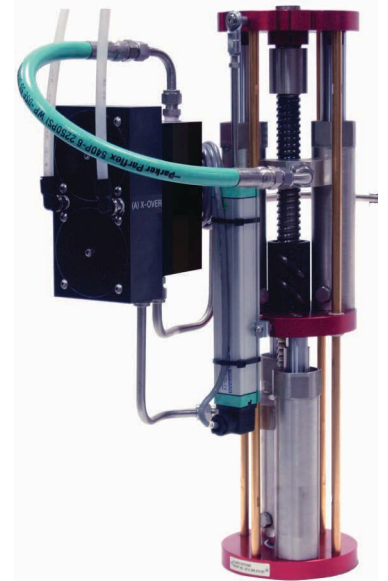
# PK6D

6 LDP Pump System (3 x 2 Component Unit)  
Variable Mix Ratio



## Features and Benefits

- Linear Displacement Pump (LDP) - Double acting positive displacement rod pumps (Patented)
  - Continuous metered flow (virtually pulse-free) = Shorter Cycle Time
  - Two Component Variable Mix Ratio – 1:1 to 100:1 (+/-1%) = Long Term Utility
  - Dynamic flow rate control 1cc/min. to >gal/min. = Precision Flow Control
  - Viscosity range 1cps to heavy non-flow abrasive compounds = Universal Pump Utility
  - Pressure range 1psi to >3,000psi = Universal Pump Utility
  - No Pistons, Check Valves, Flow Meters = No Slip Factor, No Calibration, Reliability
  - Low shear = Density Integrity of Syntactic Compounds
- Cross-Over Valve (XV3) – Automated 4-way directional flow control valve (Patented)
  - Replaces check valves for load/dispense functions during LPD reciprocations = Reliability
  - Allows pressure balancing inlet/outlet pressures = Continuous Pulse-Free Metered Flow
- PLC Servo Motor Pump Drives Control
  - Enables Precision Mix Ratio, Flow Control and Factory Automated



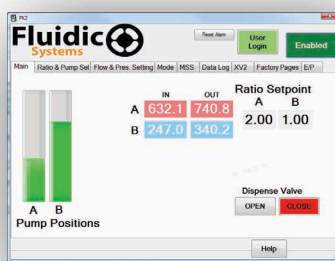
## Applications

Adhesive/Sealants  
Potting/Encapsulants  
Paints/Coatings

## Markets

General Industrial  
Electrical/Electronic  
Automotive  
Military/Aerospace Industries.

PK2D Animation



## Control Functions

- Windows HMI Touch Screen
- No Mechanical Control Adjustments, Statistical Process Reporting (SPR), Control Integrations, Diagnostic Troubleshooting, PM Monitoring, Remote Control Access

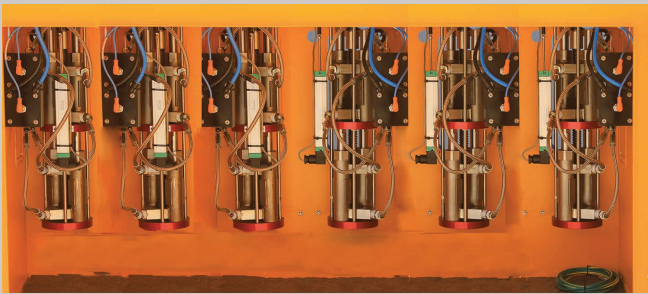
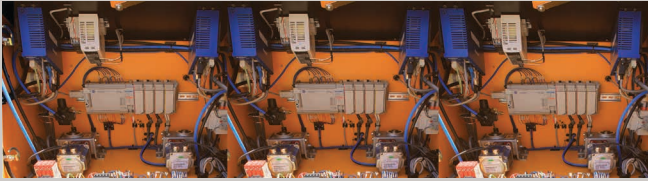
## Standard Features

- Linear Displacement Pumps (LDP)
- Cross-Over Valves (XV3)
- PLC Controlled Servo Drives
- Touch Screen Control Interface - Windows HMI 12" Color Touch Screen
- Customized HMI Control Screens. Statistical Process Reporting (SPR), Remote Access, Control Integrations, Diagnostic Troubleshooting, PM Monitoring
- Dispense Valve Gun
- Cabinet Casters
- Dispense Modes: Manual / Programmable

## Optional Features

- Windows HMI 12" Color Touch Screen
- Customized HMI Control Screens. Statistical Process Reporting (SPR), Remote Access, Control Integrations, Diagnostic Troubleshooting, PM Monitoring
- Material Supply Sensors (MSS) – Inlet Material Sensors
- Liquid Level Sensors - Pressure Pots, Pails, Drums, Totes
- Auto Pressure Balancing – Inlet Supply / Outlet Dispense Pressures
- Static Mounted Dispense Valve - Foot Switch or Robotic Activation
- Robotic Integration – Start/Stop, Flow Control, Purge/Flush Control
- Type X Air Purge – Class I, Div1, Group D
- Duplex LDP Metering

- Material Supply – Pressure Pots / Transfer Pumps
- Signal Tower – LED Light/Audible Alarm
- Mobile Self Contained Platforms
- Overhead Jib Crane
- TFE SS Braided Hose Assemblies
- Thermostatic Controlled Heating Solutions

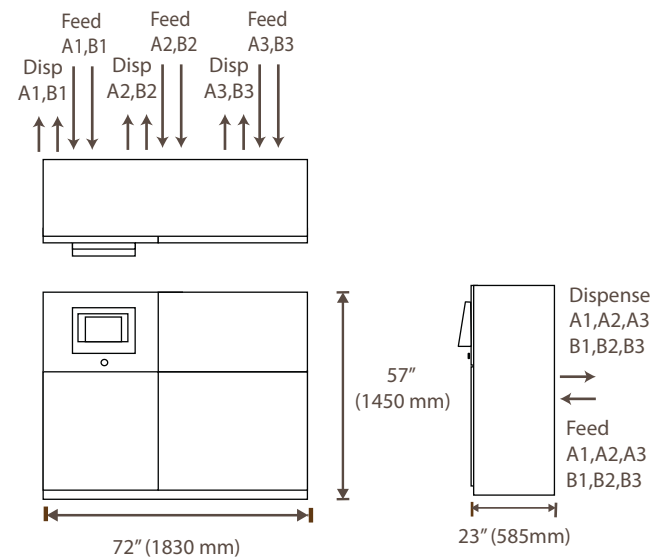


## Technical Specifications

- Mix ratio range A:B .....1:1:1 to 100:100:1\*
- Mix ratio tolerance range .....  $\pm 1\%$ \*
- Minimum shot size.....0.5 g/0.018 oz)\*
- Minimum flow rate .....5 cc/min (0.17 fl.oz/min)\*
- Maximum flow rate .....10,000 cc/min (2.7 gal/min)\*
- Maximum fluid working pressure ..... >3,000 psi\*
- Air supply pressure range.....5-8.5 kg/cm<sup>2</sup>(80-120 psi) @ 20 CFM
- Operating temperature range ..... 4 to 60 C (40 to 140 F)
- Electrical requirements: .....120 VAC (60 Hz) 1 $\Phi$ , 25 amps  
.....220 VAC (60 Hz) 1 $\Phi$ , 25 amps
- Wetted materials .303, 316 SS, TFE UHMWPE, anodized aluminum
- Viscosity range of fluids .....1 cps to Non-flow abrasive comp.
- Fluid Handled .....One or two components  
.....(epoxies, urethanes, silicones, acrylics, polyesters)

\*Application dependent

## Dimension Drawings for PK3D. All dimensions are in inches (millimeters).



**Fluidic**  
Systems

2655 S. Orange Avenue, Santa Ana, CA 92707-3738  
+1(714)556-6747  
www.fluidicsystems.com  
sales@fluidicsystems.com